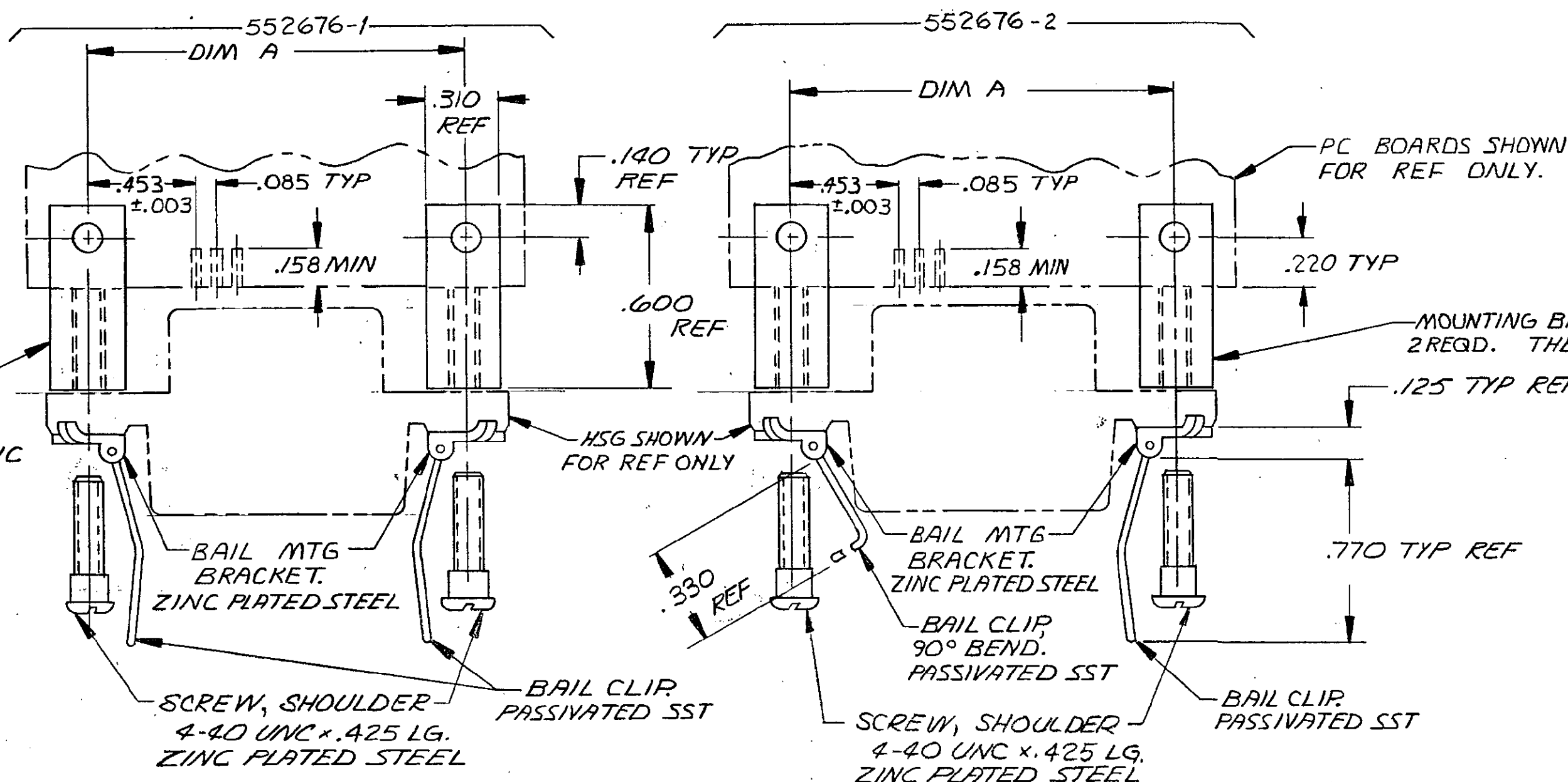


© COPYRIGHT 1977 BY AMP INCORPORATED, HARRISBURG, PA. ALL INTERNATIONAL RIGHTS RESERVED. AMP INCORPORATED PRODUCTS COVERED BY U.S. AND FOREIGN PATENTS AND/OR PATENTS PENDING.

UNPUBLISHED COPY NOT TO BE REPRODUCED NOR PUBLISHED WITHOUT WRITTEN PERMISSION OF AMP INCORPORATED

LOC AA DIST 20

REVISIONS						
P	F	ZONE	LTR	DESCRIPTION	DATE	APPROVED
1			C	OBS:-2; EC 0210-0412-96	21AUM/6	DJ RF



64	3.542	
50	2.946	
36	2.352	
24	1.842	
14	1.416	.125
NO OF POSN	DIM A	MTG HOLE DIA

CHAMP\* / CHAMP-LOK \* Connectors  
\* Trademarks of AMP Incorporated

552676-1  
PART NO

UNLESS OTHERWISE SPECIFIED DIMENSIONS ARE IN INCHES. TOLERANCES ON: DECIMALS ±.015 ANGLES ±.2	CONTRACT NO	AMP INCORPORATED Harrisburg, Pa.	
	DR <i>Jerry P. Little</i> 4-20-77	NAME KIT, HARDWARE ASSY, EDGE MT, PCB BAIL LOCK	
	CHK <i>J. Chapman</i> 4-26-77	SIZE B	CODE IDENT NO 00779
	APPD <i>D. Segel</i> 4-27-77	NUMBER 552676	SHEET 1 OF 1
MATERIAL	DSGN APPD	SCALE NTS	
FINISH	OTHER APPD		